



Koç University Social Impact Forum KUSIF

CREATING

MEASURING
MANAGING
MAXIMISING

COMMUNICATING

SOCIAL
IMPACT

Gonca Ongan
Managing Director
gongan@ku.edu.tr

kusif.ku.edu.tr



Koç University Social Impact Forum

KUSIF

+ Ultimate Goals

Increased
engagement of
KU with social
impact issues

Increased social
impact of social
impact actors*

*We define social actors as actors that aim to foster positive social change in society. Social Enterprises, Civil Societal Organizations and Businesses are majors social actors.



Koç University Social Impact Forum

KUSIF

+ Outcomes and Activities

ACTIVITIES

- Useful networks and connections
- Raising awareness about social problems
- Promoting sustainable campus
- Integrating social impact and sustainability issues into the existing curriculum

OUTCOMES

1. Increase engagement of KU Community with social impact actors
2. Increased KU Community knowledge and skills on social impact and sustainability issues through academic agenda and projects

Increased engagement of KU with social impact issues



Koç University Social Impact Forum

KUSIF

+ What KUSIF supports

Education and Outreach

- Community Engagement and Leadership Track
- Social Entrepreneurship Course, Social Impact Creation and Project Management
- Collaborating with other course: Public Health Course and Sarıyer Health Center
- Connecting students with social impact actors

Engagement

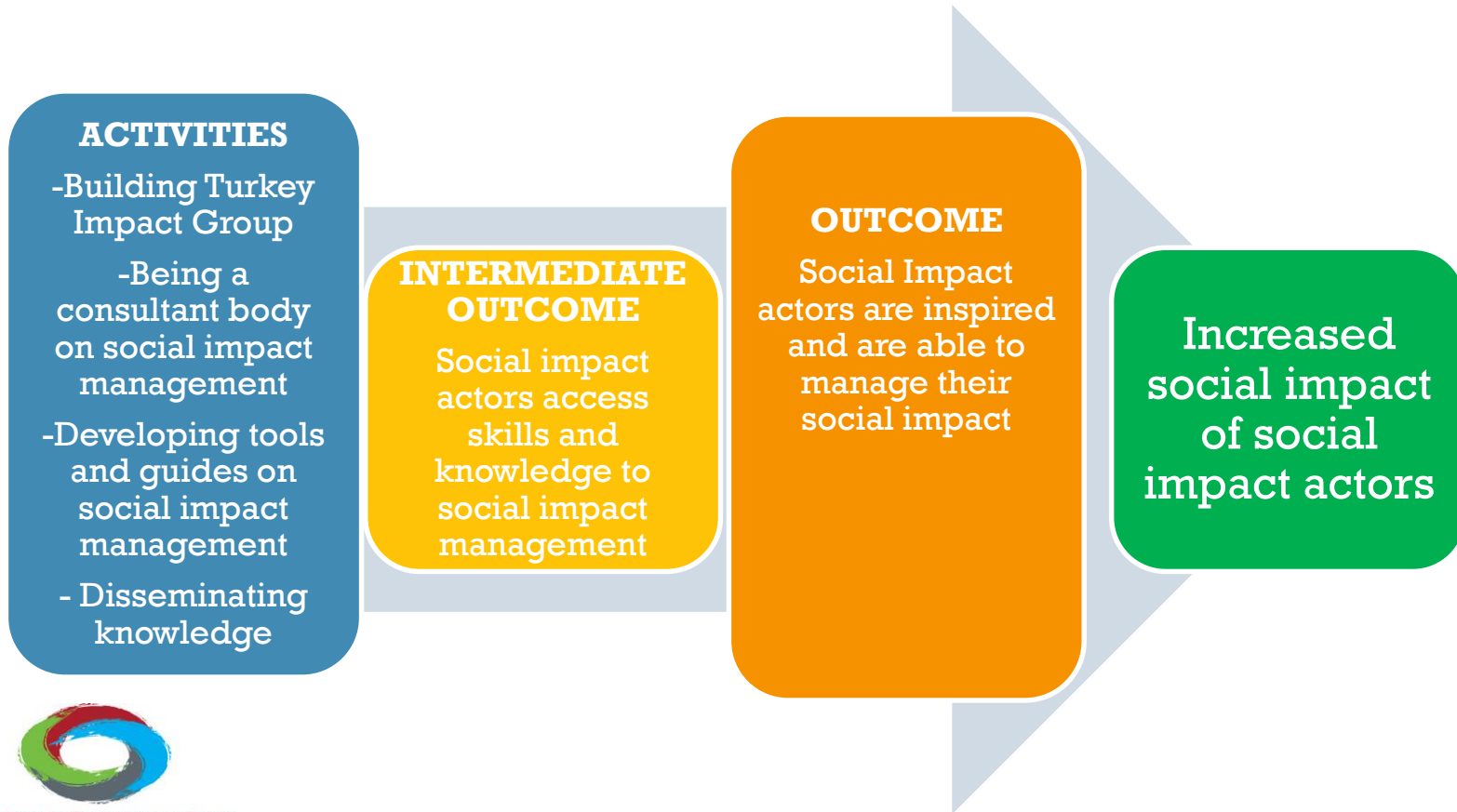
- UN Global Compact, PRIME (Principles for Responsible Management Education)
- International Sustainable Campus Network
- Global Social Venture Competition
- Modelling Sustainable Cross-Campus Operation Certificate Program

+ What KUSIF supports

Governance in the campus

- Sustainability Task Force
- Sustainability Reporting
- Rethinking Paper in the Campus

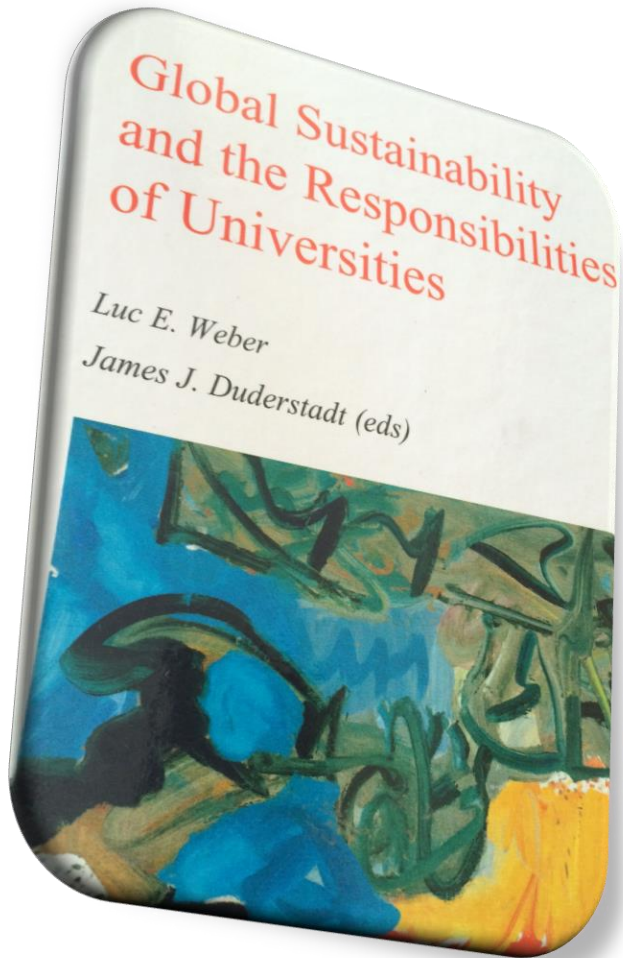
+ Outcomes and Activities



Koç University Social Impact Forum

KUSIF

+ Problem Definition



“Higher Education Institutions (HEIs) are not playing enough role in search of global sustainability

Tool is:

Adapting a holistic approach to sustainability in the HEIs

+ Holistic Approach to Sustainability for HEIs

The 6 pillars

A Concerted action

Sustainability in
Campus Operations

Education and
Outreach

Engagement

Sustainability
Research Outlook

Campus Community

Sustainability
Governance

A University should
be a model for
sustainability

An area of
collaboration with
many stakeholders
to create
collaborative
impact

Holistic Approach to Sustainability Implementations



Pillar 1: Environmental Sustainability in Campus Operations

Energy
Consumption

Water

Carbon
Foot Print

Waste and
Recycling

Transport

Procurement

Campus
Development

Food and
Dining

Efficient Use of
Resources



Pillar 2: Sustainability in Education and Outreach

Curriculum

Outreach Programs



Pillar 3: Sustainability Engagement

Engagement

Community Engagement



Pillar 4: Research Outlook on Sustainability



Pillar 5: Campus Community (Students, Faculty, Staff)

Diversity, Affordability, Equity and Inclusion

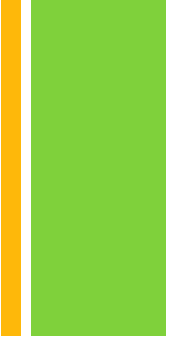
Human Resource



Pillar 6: Development and Implementation of Sustainability Policies and Efforts

Sustainability Governance

Coordination and Planning



Thank you